


# Installation instruction

## 1. Hardware and parts list:

NO.	Item	Photo	QTY	NO.	Item	Photo	QTY
1)	Undermount Bracket		2 pcs	2)	Corner Support Arm		2 pcs
3)	Gas Cylinder		2 pcs	4)	Sliding Pivot Brackets		2 pcs
5)	Mounting Bracket		2 pcs	6)	Left & Right Pivot Arms		2 pcs
7)	Centre Pole		1 pcs	8)	Lock Nuts		4 pcs
9)	Pallet Screws		20 pcs	10)	Small Screw Nuts		20 pcs
11)	Screw Nut		2 pcs	12)	Self Tapping Screws		22 pcs
13)	8*14 bolt		2 pcs	14)	Small bolt		42 pcs
15)	Saddle Block		4 pcs	16)	8*13 bolt		6 pcs
17)	Lock nuts Cap		21 pcs	18)	Lock Bar		1 pcs

19)	Carriage Bolt		1pc			
-----	---------------	--	-----	--	--	--

**Installation method I:**

**Step 1:**

Find out a suitable position, use 9) Screws to attach the 5) Mounting Bracket on the cabinet.



**Step 2:**

Slide the 4) Sliding Pivot Brackets into 5) Mounting Bracket on the cabinet.

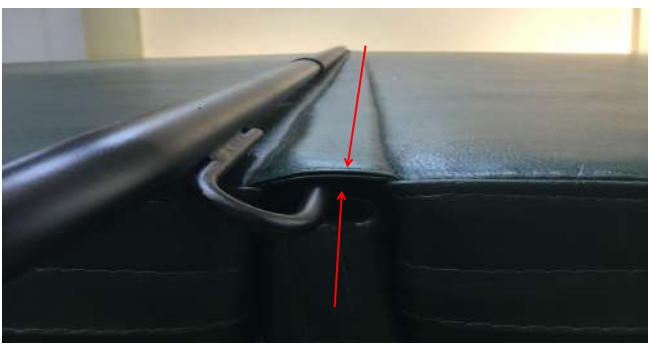


**Step 3:**

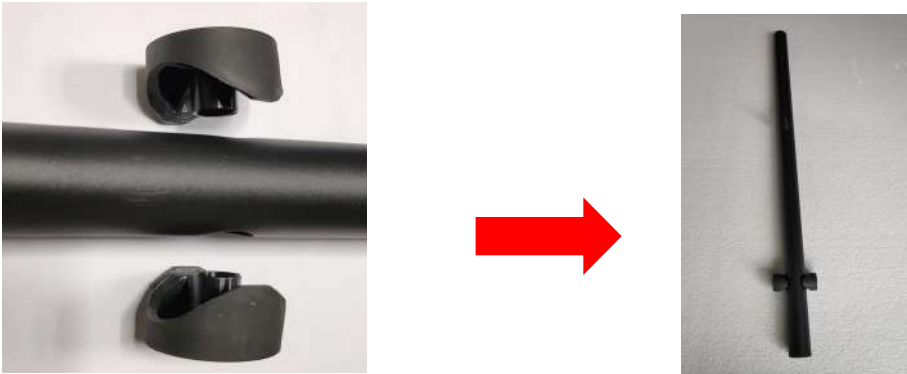
Connect the Round Pivot Arms 2) Corner Support Arm and 7) Centre Pole.



*Please notice that the barb have to be slided into the hinge of the cover.*



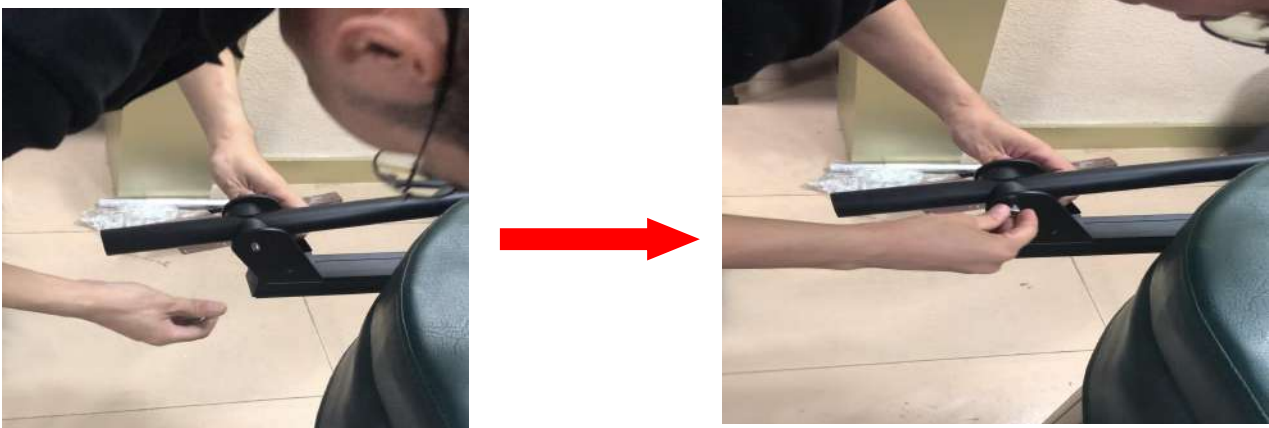
**Step 4:**  
**Connect the 15) Saddle Block to 6) Left & Right Pivot Arms.**



**Step 5:**  
**Connect the 6)Left & Right Pivot Arms to 2)Corner Support Arm**



**Step 6:**  
**Fix the end of the 6)Round Pivot Arms to the 4)Sliding Pivot Brackets with 11) Screw Nut.**



**Step 7:**  
**Adjust the length, make sure the 4)Sliding Pivot Brackets is in line with the pallet.**



**Step 8:**

After adjustment, use 12) Self Tapping Screws to fix the 4) Sliding Pivot Brackets with the 5) Mounting Bracket.



**Step 9:**

Adjust the width, use 12) Self Tapping Screws to fix the 2) Corner Support Arm with the 7) Centre Pole.



**Step 10:**

Use 12) Self Tapping Screws to fix the 2) Corner Support Arm with the 6) Round Pivot Arms.



**Step 11:**

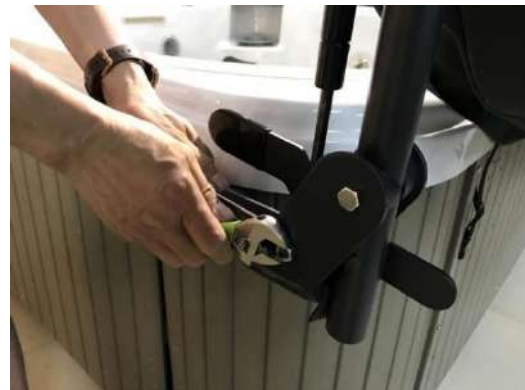
Lift up the spa cover, then attach the 18) Lock Bar to the inside edge of the 4) Sliding Pivot Brackets with the 19) Carriage Bolt and the 17) Lock Nuts Cap. Making sure the cut out on the lock bar is facing up. Then install the 13) 8\*14 bolt on the pin head.

**\*\* Please notice that the lock bar is to be installed on the entry side of the spa.**



**Step 12:**

**Mount the barrel end of the 3)Gas Cylinder onto the 6)left&right Pivot Arm with the 8)Lock Nut. Then connect the 3)Gas Cylinder- Rod ball stud to the bottom inside hole of the 4)Sliding Pivot Brackets. Install the 13)8\*14 bolt on the pin head. Repeat on the other side.**



**Installation finished.**



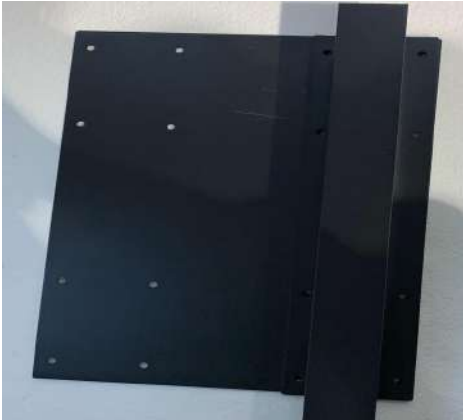


## Installation method II:

Follow the steps in Installation method I, connect the 3)Hydraulic Support Rod to the, 4)Sliding Pivot Brackets, 5) Mounting Bracket and 6) Left & Right Pivot Arms.

### Step1:

Fix the 5)Mounting Bracket onto the 1) Undermount Bracket.



### Step 2:

Connect the 15) connector to 6) Left & Right Pivot Arms.



### Step3:

Connect the 2) Corner Support Arm with 7) Centre Pole, then connect the 7) Centre Pole with the 6) Left & Right Pivot Arms and adjust the position.

### Step 4:

Use 12) Self Tapping Screws to fix all the parts, then slide the 1) Under-mount Bracket into the bottom of the spa.



Step 5: Installation finished.

## **ATTENTION: & IMPORTANT!!!**

**Please lift up the 18)Lock Bar prior to closing the spa cover.**



**(2) Bolts 13) 14) 16) are used to cover the screws, to protect them and to make the lifter look nicer.**

