









Installation Instructions

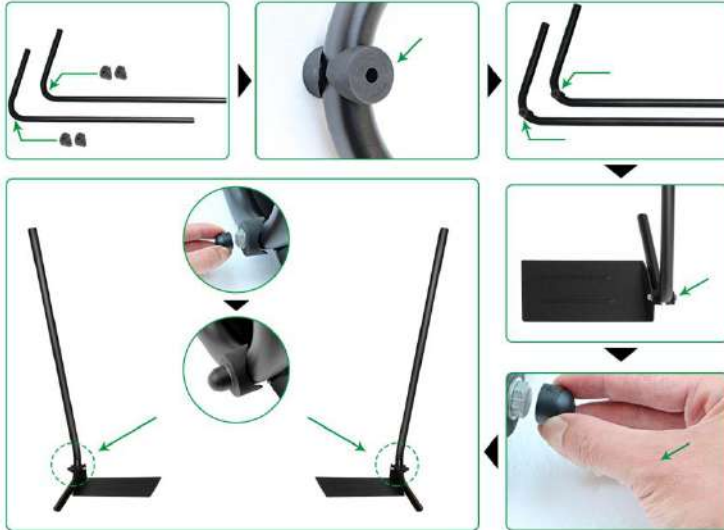
1) Hardware and parts list :

| NO. | Item | Photo | QTY | NO. | Item | Photo | QTY |
|-----|-----------------------------|---|------|-----|--|---|-------|
| 1. | Mounting Brackets |  | 2pcs | 2. | Pivot Arm |  | 2pcs |
| 3. | Upper & Lower Support Arms; |  | 4pcs | 4. | Large/ Small Black Dome Cap |  | 26pcs |
| 5. | Bushing |  | 4pcs | 6. | Hex Cap Bolt; Flat Washer; Nylon Locknut |  | 8pcs |
| 7. | Center Coupler |  | 2pcs | 8. | Self tapping screws (M5 x 16mm) |  | 24pcs |

2) Installation Steps:

Step 1: Connect the Pivot Arm and two Bushings to the Mounting Brackets, using one Hex Cap Bolt, two Flat Washers, and one Nylon Locknut, press the decorative Large Black Dome Caps over the heads of the Hex Cap Bolts, as shown in the below picture. Then slide the Mounting Brackets under the left and right sides of the spa.

Note: If necessary, slide the Wrench behind the Mounting Bracket to tighten the Nylon Locknut.



Step 3: Insert the long end of the Support Arms into the center Coupler Piece. Then slide Support Arms into the Pivot Arms.

Next, insert the Lower Support Arms into the other Coupler Piece, then slide the Lower Support Arms into the remaining end of the Pivot Arms.



Step 4:

Lay the Cover Lift on the spa cover. Position ①④, using the Self Tapping Screws to fasten the Support Arms and Coupler Piece together. Position ②③, using the Self Tapping Screws to fasten the Support Arms to the Pivot Arms. Then press the decorative Small Black Dome Caps over the heads of all the exposed screws.

