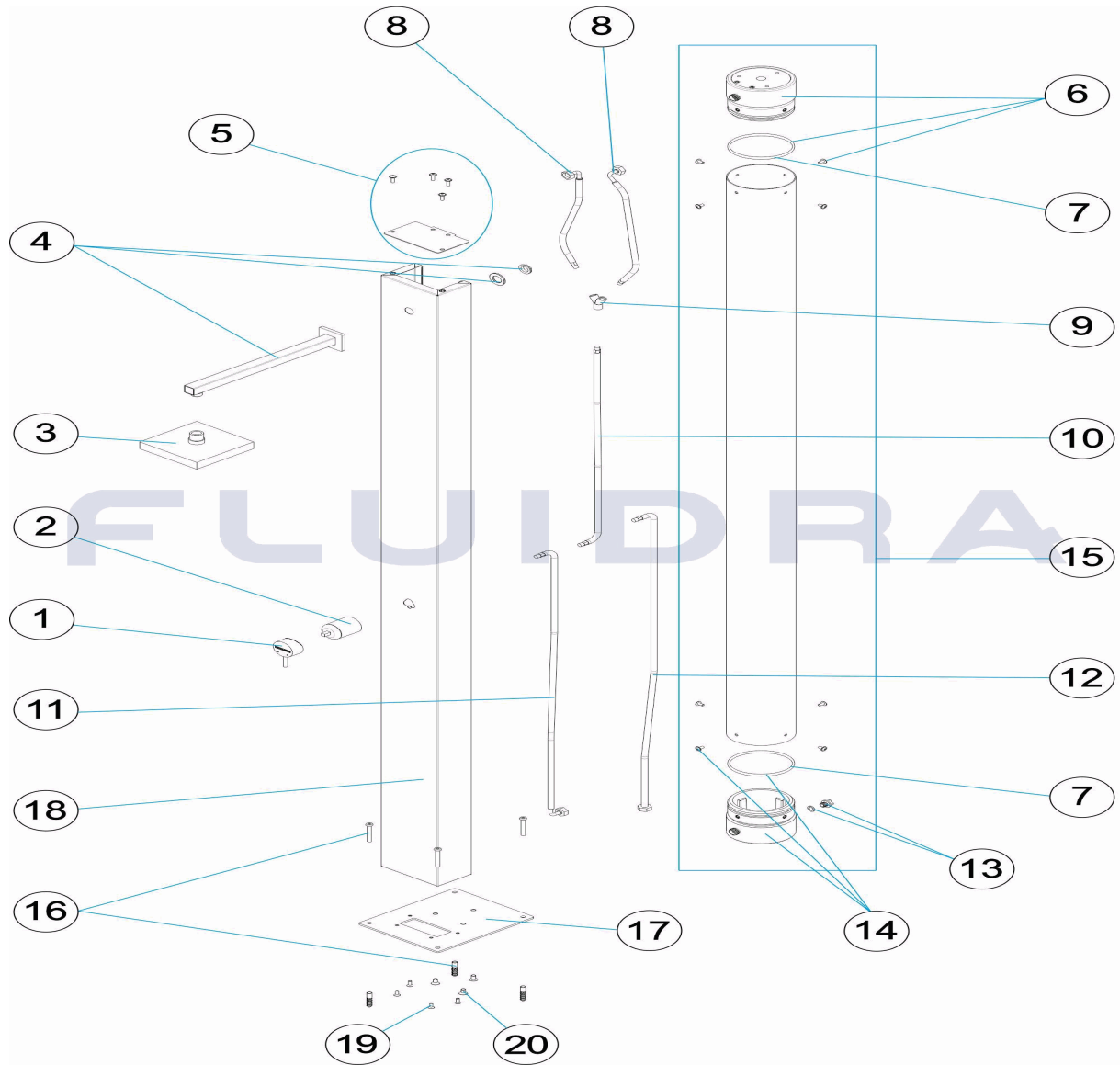


CODIGO **53873**

DESCRIPCION: **DUCHA SOLAR NIAGARA**

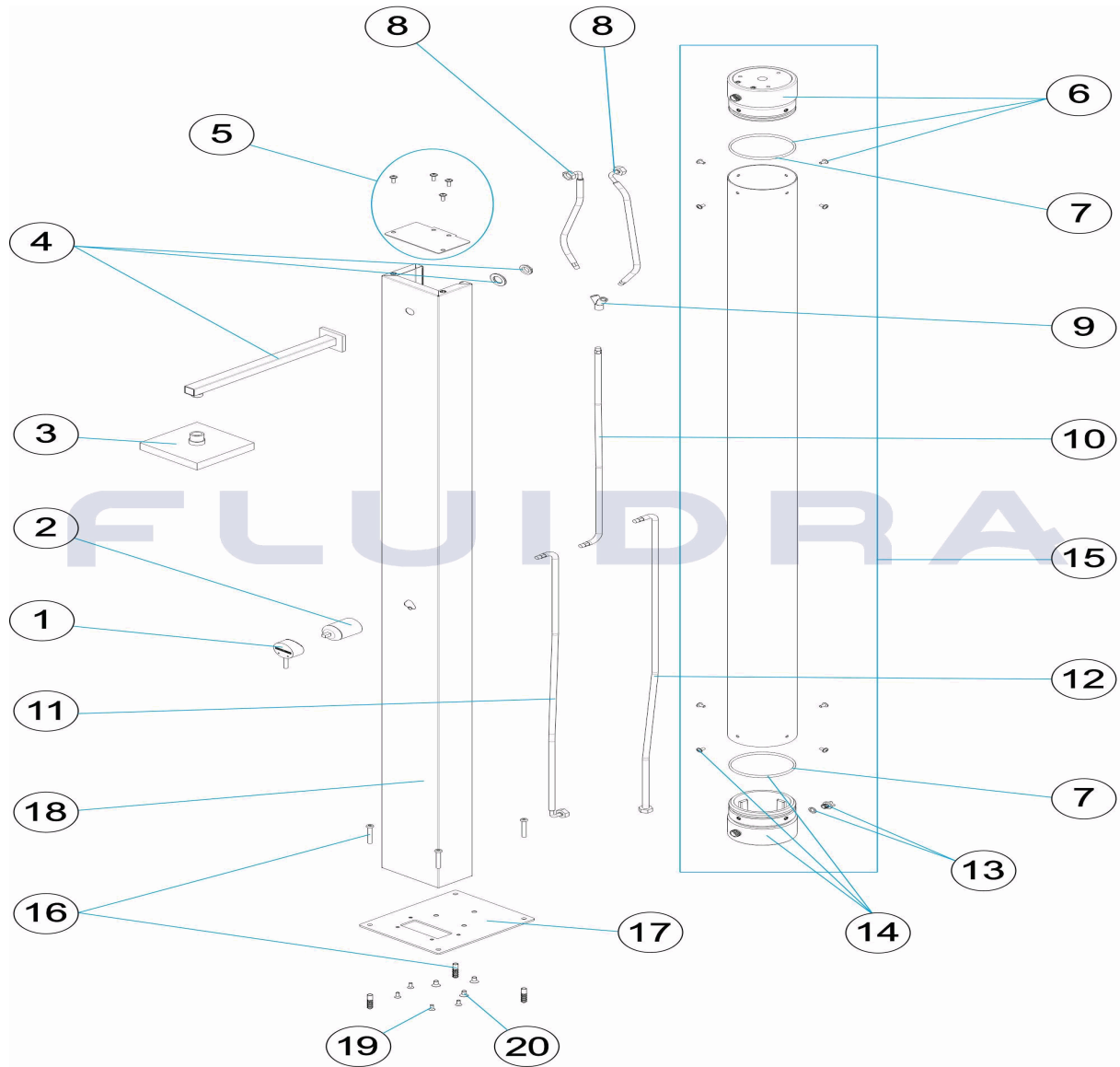


**ESPAÑOL**

| POS | CODIGO     | DESCRIPCION                           | CANTIDAD | POS | CODIGO     | DESCRIPCION                           | CANTIDAD |
|-----|------------|---------------------------------------|----------|-----|------------|---------------------------------------|----------|
| 1   | 4401040070 | POMO MONOMANDO                        |          | 11  | 4401043617 | LATIGUILLO 1/2" HEMBRA CODO + M-10 MA |          |
| 2   | 4401043605 | CUERPO MONOMANDO                      |          | 12  | 4401043618 | LATIGUILLO 1/2" HEMBRA + M-10 MACHO L |          |
| 3   | 4401040052 | ROCIADOR                              |          | 13  | 4401043621 | CJTO. TAPON PURGA                     |          |
| 4   | 4401040053 | BRAZO DUCHA                           |          | 14  | 4401040073 | TAPON CON PURGA                       |          |
| 5   | 4401040071 | TAPA SUPERIOR                         |          | 15  | 4401040074 | CJTO. DEPOSITO                        |          |
| 6   | 4401040072 | TAPON SIN PURGA                       |          | 16  | 4401040056 | CJTO. TACO FIJACION                   |          |
| 7   | 4401043609 | JUNTA TORICA D. 100X6,99              |          | 17  | 53873R0110 | UNIT ANCHORING PLATE                  |          |
| 8   | 4401043614 | LATIGUILLO 1/2" HEMBRA + M-10 MACHO L |          | 18  | 53873R0120 | CUERPO DUCHA                          |          |
| 9   | 4401043615 | CONEXIÓN "Y" M-10 HEMBR "             |          | 19  | 4401040276 | TORNILLERIA FIJACION DUCHA            |          |
| 10  | 4401043616 | LATIGUILLO 1/2" HEMBRA + M-10 MACHO L |          | 20  | 4401040277 | TORNILLERIA FIJACION DEPOSITO         |          |

CODE 53873

DESCRIPTION: DOUCHE SOLAIRE NIAGARA

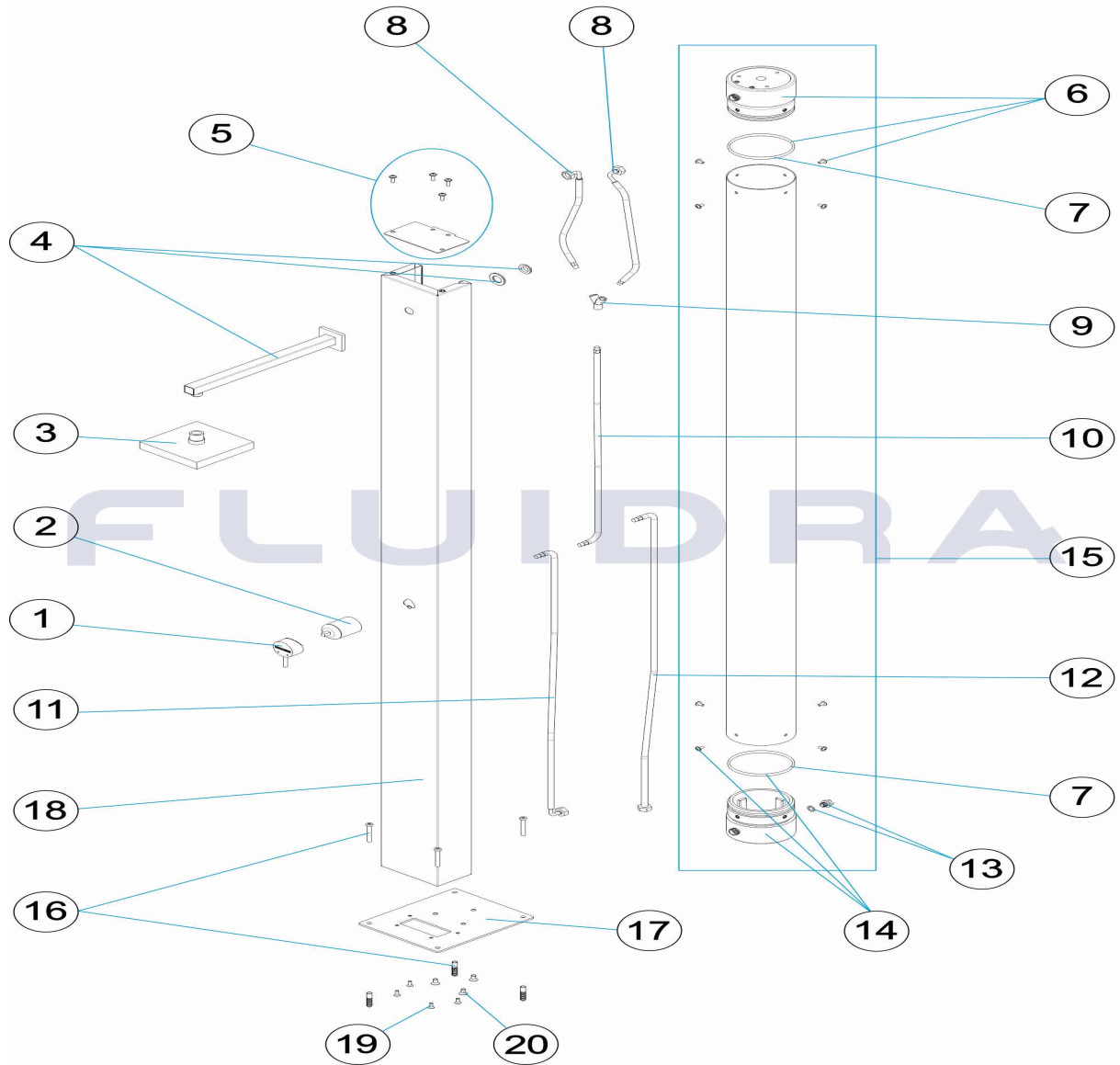


FRANCAIS

| POS | CODE       | DESCRIPTION                           | QUANTITE | POS | CODE       | DESCRIPTION                            | QUANTITE |
|-----|------------|---------------------------------------|----------|-----|------------|--|----------|
| 1   | 4401040070 | ROBINET MITIGEUR                      |          | 11  | 4401043617 | TUYAU 1/2" FEMELLE COUDE + M-10 MÂLE   |          |
| 2   | 4401043605 | CORPS MITIGEUR                        |          | 12  | 4401043618 | TUYAU 1/2" FEMELLE + M-10 MÂLE L=1300' |          |
| 3   | 4401040052 | POMME DE DOUCHE                       |          | 13  | 4401043621 | ENSEMBLE BOUCHON PURGE                 |          |
| 4   | 4401040053 | BRAS DE DOUCHE                        |          | 14  | 4401040073 | BOUCHON AVEC PURGE                     |          |
| 5   | 4401040071 | COUVERCLE SUPÉRIEUR                   |          | 15  | 4401040074 | ENSEMBLE RÉSERVOIR                     |          |
| 6   | 4401040072 | BOUCHON SANS PURGE                    |          | 16  | 4401040056 | ENSEMBLE FIXATION                      |          |
| 7   | 4401043609 | JOINT TORIQUE D. 100X6,99             |          | 17  | 53873R0110 | PLAQUE FIXATION CORPS                  |          |
| 8   | 4401043614 | TUYAU 1/2" FEMELLE + M-10 MÂLE L=400" |          | 18  | 53873R0120 | CORPS DE DOUCHE                        |          |
| 9   | 4401043615 | RACCORD "Y" M-10 FEMELL "             |          | 19  | 4401040276 | VISSERIE DE FIXATION DE DOUCHE         |          |
| 10  | 4401043616 | TUYAU 1/2" FEMELLE + M-10 MÂLE L=800" |          | 20  | 4401040277 | VISSERIE DE FIXATION RÉSERVOIR         |          |

CODE **53873**

DESCRIPTION: **NIAGARA SOLAR SHOWER**

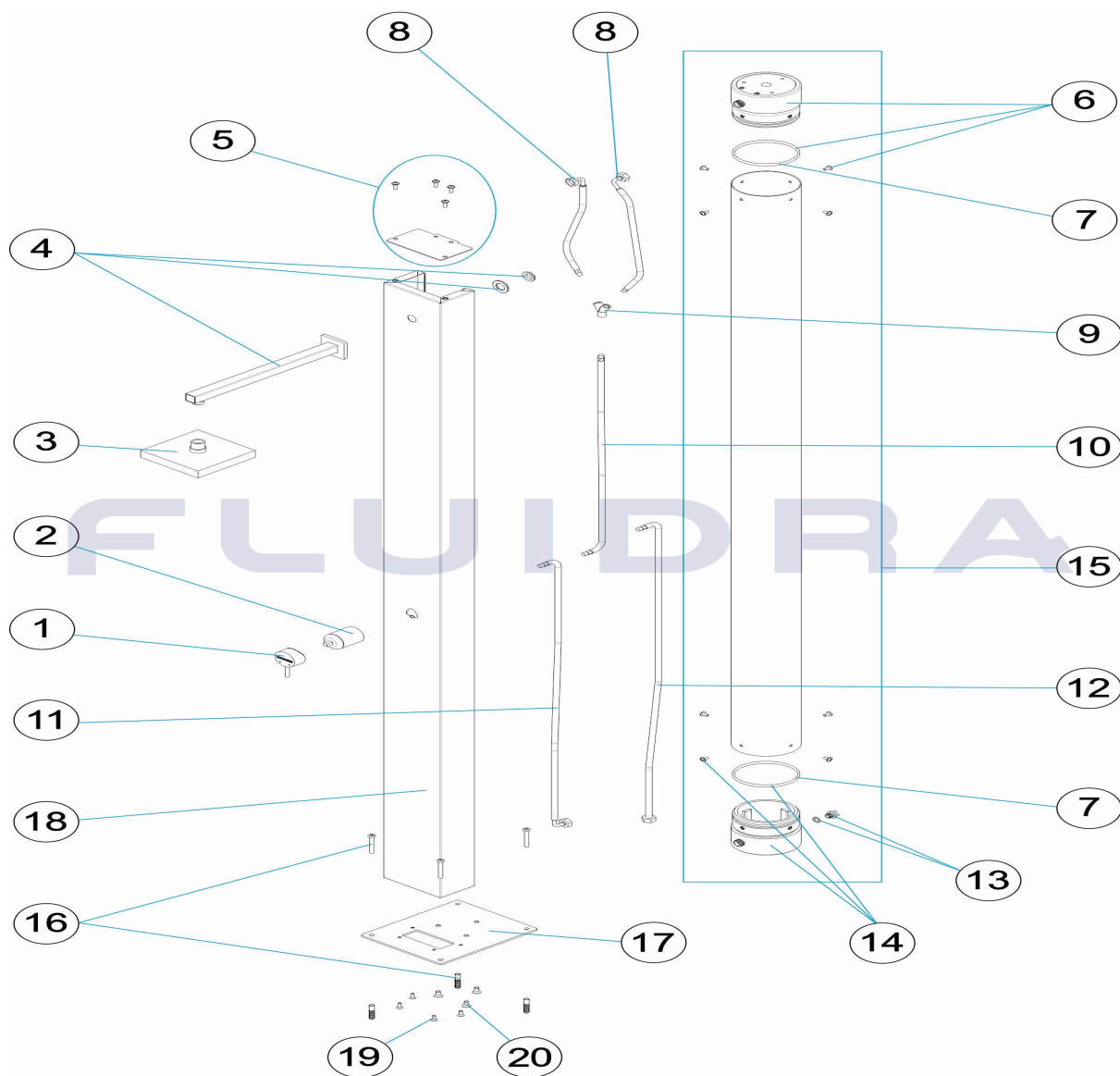


**ENGLISH**

| POS | CODE       | DESCRIPTION                           | QUANTITY | POS | CODE       | DESCRIPTION                           | QUANTITY |
|-----|------------|---------------------------------------|----------|-----|------------|---------------------------------------|----------|
| 1   | 4401040070 | SINGLE-LEVER KNOB                     |          | 11  | 4401043617 | FLEXIBLE HOSE 1/2" FEMALE ELBOW + M-  |          |
| 2   | 4401043605 | SINGLE-LEVER HANDLE CASING            |          | 12  | 4401043618 | FLEXIBLE HOSE 1/2" FEMALE + M-10 MALE |          |
| 3   | 4401040052 | SPRINKLER                             |          | 13  | 4401043621 | DRAIN CAP SET                         |          |
| 4   | 4401040053 | SHOWER ARM                            |          | 14  | 4401040073 | CAP WITH PURGE                        |          |
| 5   | 4401040071 | TOP COVER                             |          | 15  | 4401040074 | TANK UNIT                             |          |
| 6   | 4401040072 | CAP WITHOUT PURGE                     |          | 16  | 4401040056 | BRAIDED HOSE                          |          |
| 7   | 4401043609 | O-RING D. 100X6.99                    |          | 17  | 53873R0110 | VERANKERUNGSPLAKETTE GEHÄUSE          |          |
| 8   | 4401043614 | FLEXIBLE HOSE 1/2" FEMALE + M-10 MALI |          | 18  | 53873R0120 | SHOWER BODY                           |          |
| 9   | 4401043615 | Y" CONNECTOR M-10 FEMAL "             |          | 19  | 4401040276 | SHOWER FIXING SCREWS                  |          |
| 10  | 4401043616 | FLEXIBLE HOSE 1/2" FEMALE + M-10 MALI |          | 20  | 4401040277 | TANK FIXING SCREWS                    |          |

CODICE **53873**

DESCRIZIONE: **DOCCIA SOLARE NIAGARA**

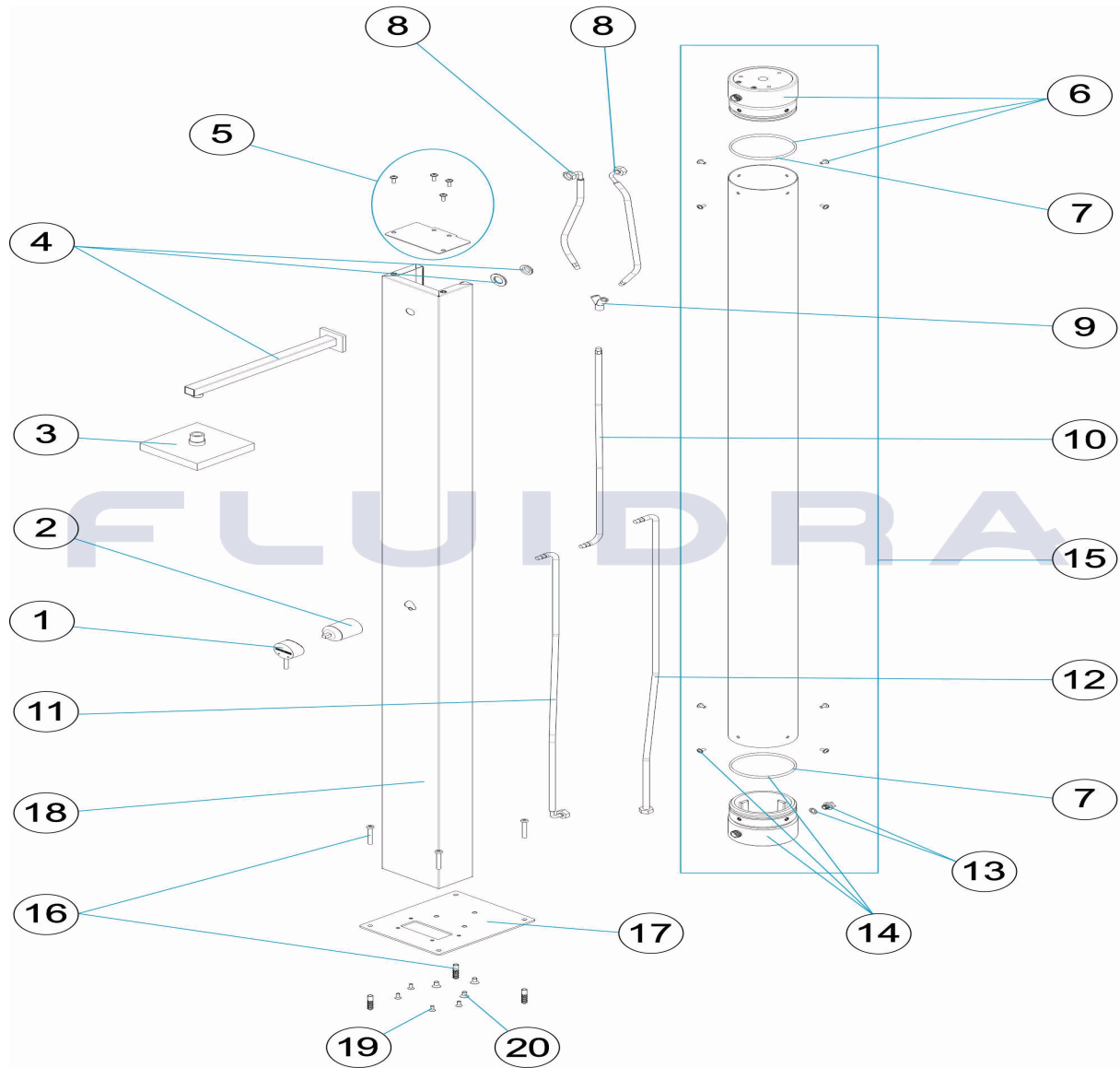


**ITALIANO**

| POS | CODICE     | DESCRIZIONE                          | QUANTITA' | POS | CODICE     | DESCRIZIONE                           | QUANTITA' |
|-----|------------|--------------------------------------|-----------|-----|------------|---------------------------------------|-----------|
| 1   | 4401040070 | POMELLO MONOCOMANDO                  |           | 11  | 4401043617 | SPINOTTO 1/2" FEMMINA A GOMITO + M-10 |           |
| 2   | 4401043605 | CORPO MONOCOMANDO                    |           | 12  | 4401043618 | SPINOTTO 1/2" FEMMINA + M-10 MASCHIO  |           |
| 3   | 4401040052 | SPRUZZATORE                          |           | 13  | 4401043621 | CONGIUNTO COPERCHIO SPURGO            |           |
| 4   | 4401040053 | BRACCIO DOCCIA                       |           | 14  | 4401040073 | TAPPO CON PURGA                       |           |
| 5   | 4401040071 | COPERCHIO SUPERIORE                  |           | 15  | 4401040074 | COMPLESSO DEPOSITO                    |           |
| 6   | 4401040072 | TAPPO SENZA PURGA                    |           | 16  | 4401040056 | CONGIUNTO FISSAGGIO                   |           |
| 7   | 4401043609 | GIUNTURA TORICA D. 100X6,99          |           | 17  | 53873R0110 | PLACCA ANCORAGGIO CORPO               |           |
| 8   | 4401043614 | SPINOTTO 1/2" FEMMINA + M-10 MASCHIO |           | 18  | 53873R0120 | CORPO DOCCIA                          |           |
| 9   | 4401043615 | CONNESSIONE "Y" M-10 FEMMIN "        |           | 19  | 4401040276 | KIT BULLONERIA FISSAGGIO DOCCIA       |           |
| 10  | 4401043616 | SPINOTTO 1/2" FEMMINA + M-10 MASCHIO |           | 20  | 4401040277 | KIT BULLONERIA FISSAGGIO SERBATOIO    |           |

CODE **53873**

BESCHREIBUNG: **DUSCHE SOLAR NIAGARA**

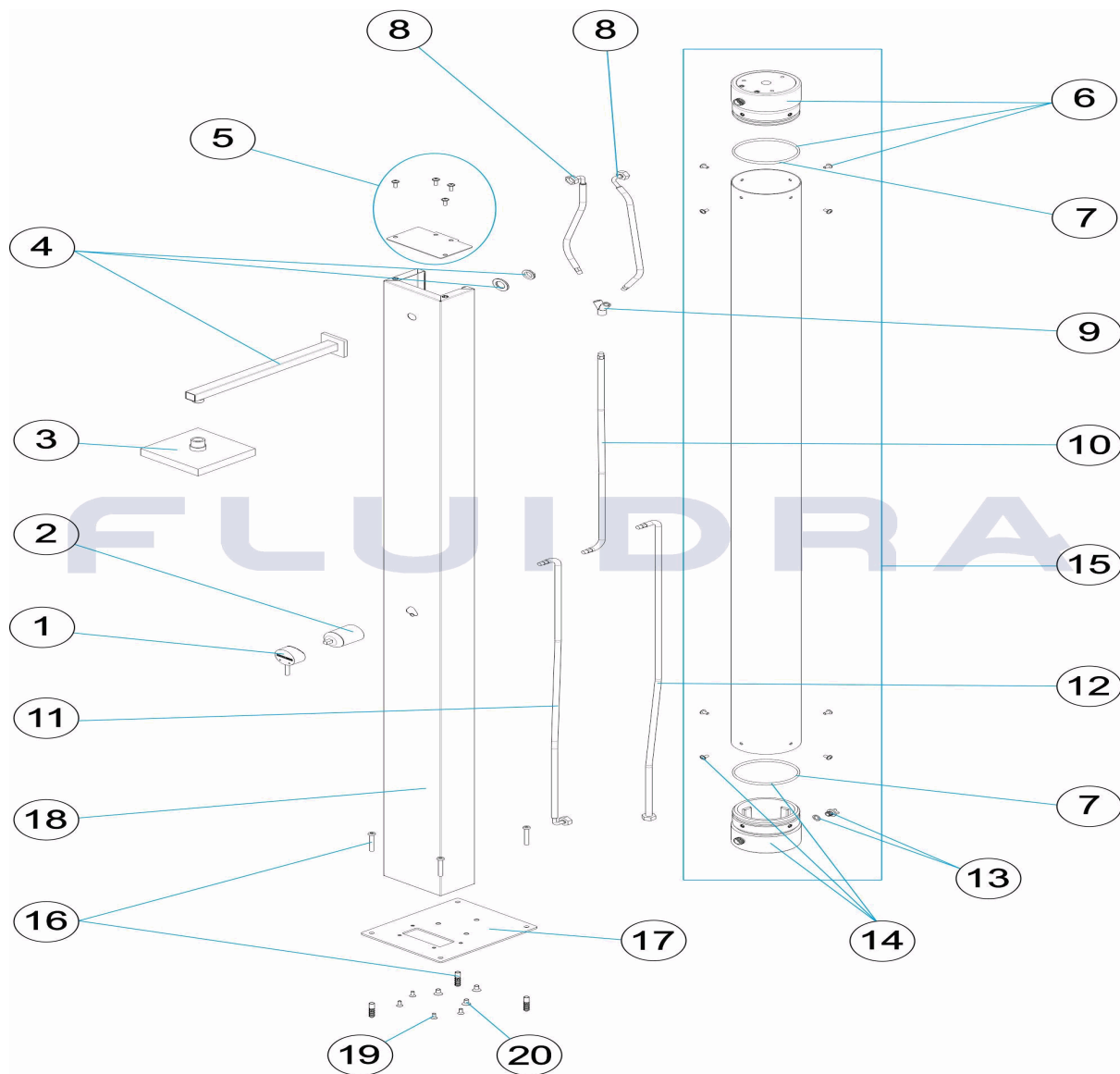


**DEUTSCH**

| POS | CODE       | BESCHREIBUNG                        | MENGE | POS | CODE       | BESCHREIBUNG                        | MENGE |
|-----|------------|-------------------------------------|-------|-----|------------|-------------------------------------|-------|
| 1   | 4401040070 | EINHANDHEBEL                        |       | 11  | 4401043617 | SCHLAUCHLEITUNG 1/2" MUFFE WINKEL U |       |
| 2   | 4401043605 | GEHÄUSE EINHANDHEBEL                |       | 12  | 4401043618 | SCHLAUCHLEITUNG 1/2" MUFFE UND M-10 |       |
| 3   | 4401040052 | DUSCHKOPF                           |       | 13  | 4401043621 | SET ABLASSSTOPFEN                   |       |
| 4   | 4401040053 | DUSCHARM                            |       | 14  | 4401040073 | STOPFEN MIT ABLASS                  |       |
| 5   | 4401040071 | ABDECKUNG OBEN                      |       | 15  | 4401040074 | BEHÄLTERSET                         |       |
| 6   | 4401040072 | STOPFEN OHNE ABLASS                 |       | 16  | 4401040056 | SET KLEMMKEIL                       |       |
| 7   | 4401043609 | O-RING D. 100 X 6,99                |       | 17  | 53873R0110 | EINHEIT VERANKERUNGSPLATTE          |       |
| 8   | 4401043614 | SCHLAUCHLEITUNG 1/2" MUFFE UND M-10 |       | 18  | 53873R0120 | DUSCH EINHEIT                       |       |
| 9   | 4401043615 | ANSCHLUSSMUFFE "Y" M-10"            |       | 19  | 4401040276 | FIXIERSCHRAUBEN DUSCHE              |       |
| 10  | 4401043616 | SCHLAUCHLEITUNG 1/2" MUFFE UND M-10 |       | 20  | 4401040277 | FIXIERSCHRAUBEN BEHÄLTER            |       |

CODIGO **53873**

DESCRIÇÃO: **DUCHE SOLAR NIAGARA**



**PORTUGUES**

| POS | CODIGO     | DESCRIÇÃO                            | JANTIDADE | POS | CODIGO     | DESCRIÇÃO                             | JANTIDADE |
|-----|------------|--------------------------------------|-----------|-----|------------|---------------------------------------|-----------|
| 1   | 4401040070 | MAÇANETA MONOCOMANDO                 |           | 11  | 4401043617 | MANGA 1/2" FÊMEA COTOVELO + M-10 MA   |           |
| 2   | 4401043605 | CORPO MONOCOMANDO                    |           | 12  | 4401043618 | MANGA 1/2" FÊMEA + M-10 MACHO L = 130 |           |
| 3   | 4401040052 | DIFUSOR                              |           | 13  | 4401043621 | CJTO. TAMPÃO PURGA                    |           |
| 4   | 4401040053 | BRAÇO CHUVEIRO                       |           | 14  | 4401040073 | TAMPÃO COM PURGA                      |           |
| 5   | 4401040071 | TAMPA SUPERIOR                       |           | 15  | 4401040074 | CJTO. DEPÓSITO                        |           |
| 6   | 4401040072 | TAMPÃO SEM PURGA                     |           | 16  | 4401040056 | CJTO. FIXAÇÃO                         |           |
| 7   | 4401043609 | JUNTA TÓRICA D. 100 X 6,99           |           | 17  | 53873R0110 | PLACA ANCORAGEM CORPO                 |           |
| 8   | 4401043614 | MANGA 1/2" FÊMEA + M-10 MACHO L = 40 |           | 18  | 53873R0120 | CORPO DE CHUVEIRO                     |           |
| 9   | 4401043615 | LIGAÇÃO "Y" M-10 FÊME "              |           | 19  | 4401040276 | PARAFUSOS FIXAÇÃO CHUVEIRO            |           |
| 10  | 4401043616 | MANGA 1/2" FÊMEA + M-10 MACHO L = 80 |           | 20  | 4401040277 | PARAFUSOS FIXAÇÃO DEPÓSITO            |           |