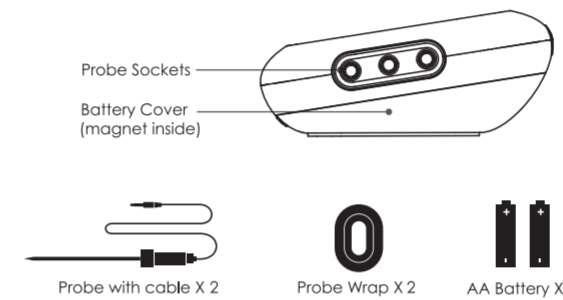
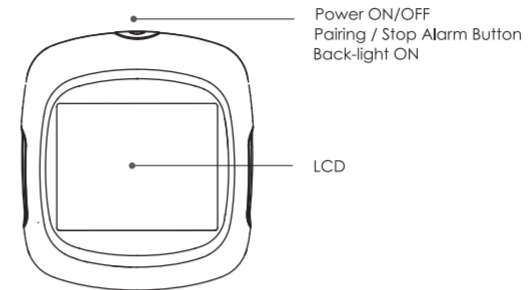


# herQs

## USER MANUAL FOR EasyBBQ

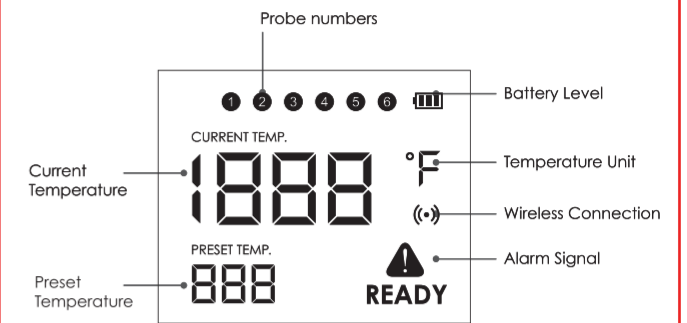
HERQS001

### Get to know the Device



The device provides 6 sockets for probes, which enable you to monitor 6 items at once. If you need more probes besides the 2 probes in the standard package, they can be purchased separately.

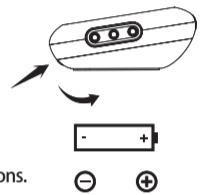
Wireless frequency range: 2400MHz-2483.5MHz  
Average current: 3V/1.4mA  
Max wireless transmission power: 2.5dbm



### Put in the Battery

2 AA size batteries are included for this device. Make sure they are put in the right direction by following the icons on the unit.

- 1 Press the lock on the battery cover and rotate to open.
- 2 Put in batteries, noticing the icons which shows directions.
- 3 Close the battery cover.



### Install the probes

Up to 6 ToGrill probes can be plugged into the device. The ToGrill smart thermometer will not work properly with probes from a different seller. The device will keep scanning all ports for new probes as long as it is turned on. The probe number and its temperature value will be displayed on the LCD screen one by one.

### Download the ToGrill APP

Download and install the ToGrill app from the Appstore or Google Play store. The app is compatible with the following devices:

iOS devices running version 11.0 or later.  
Android devices running version 5.0 or later.

*App Store is a service mark of Apple Inc.*  
*Google Play is a service mark of Google Inc.*



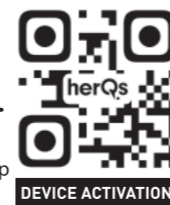
### Power ON/OFF

To turn on the thermometer press and hold the on/off button located at the top of the thermometer for more than 3 seconds until the screen shows 'ON'. Do the same to turn the thermometer off. When there is no probe plugged into the device it will be powered off automatically after some minutes.

### Activate device and pair with your phone

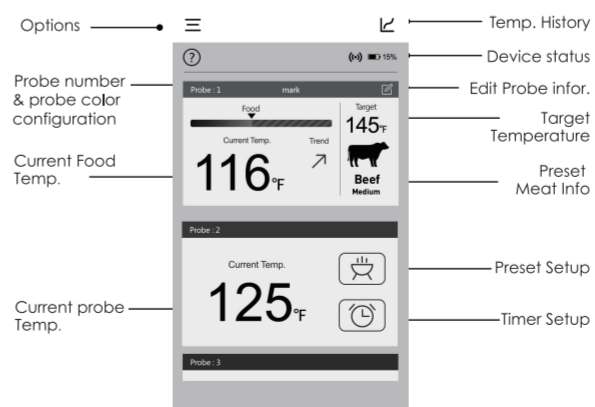
- 1 Switch on your device and keep the blue-tooth switch of your phone on.
- 2 Activate device:
  - Launch the 'ToGrill' app,
  - Enable mobile phone permissions
  - Follow the instructions in the app to activate the device
- 3 Pairing:
  - i: Choose the product you have on app
  - ii: Press the Pairing/Stop Alarm Button (on the top of the device)
- 4 Connected successfully.

*Once device is paired with your phone, you don't need to do it again, unless you change to other phones.*



### Enjoy your BBQ time

This is where you'll select preset grill times for different food types or set your own. ToGrill will tell you the actual temperatures and check progress within the temperature graphs. This way you can simultaneously track up to six pieces of food doneness. To make it even easier you can set up grilling notifications and take advantage of everything else the smart ToGrill app has to offer.



### Warning

The included probes are NOT dishwasher safe.

