



3-DIAL TSA LOCK[®] & CABLE

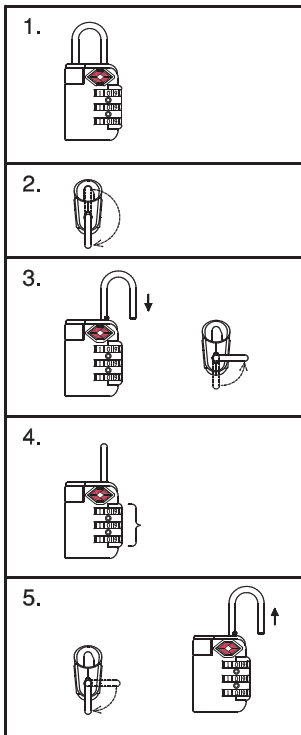
INSTRUCTIONS

ECO41028

COMBINATION LOCK

SET YOUR OWN COMBINATION

Your new lock is preset at the factory to unlock at 0-0-0, even if the dials show another number. Make sure you are able to open and close the lock prior to setting your own combination. CAREFULLY follow each step when setting your new combination.



1. Line-up the default combination (0-0-0) on the face of the lock with the small circles between the dials.
2. Pull up the shackle (open the lock) and swivel the shackle all the way to the right so that it is facing exactly opposite to the direction you started at. This is the same as moving a clock hand from 12 o'clock to 6 o'clock.
3. PRESS FIRMLY down on the shackle and at the same time turn the shackle back one quarter turn (moving it from 6 o'clock back to 3 o'clock) where the shackle is "held" into the down position.
4. Set your own combination on the face of the lock with the small circles between the dials.
5. Finally turn the shackle back to the 6 o'clock position - pull it all the way up - turn the shackle back to 12 o'clock and lock the lock as normal.



Note: The Transportation Security Administration (TSA) screeners and airline check-in staff at airports are trained to recognize the Travel Sentry[®] mark. They understand

that baggage with locks displaying this mark are permitted to remain locked. The TSA screeners are able to open these locks in the event that the baggage must be inspected. With *Travel Sentry[®] Approved* locks the TSA can screen checked baggage faster, without having to break open locks.