

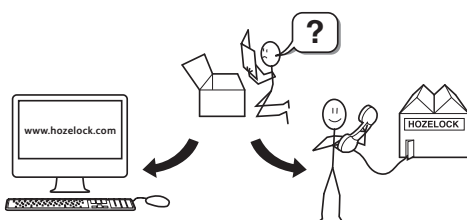
MULTIPURPOSE LED LIGHT



Hozelock Ltd.
Midpoint Park, Birmingham,
B76 1AB, England
Tel: +44 (0) 121 313 1122

www.hozelock.com

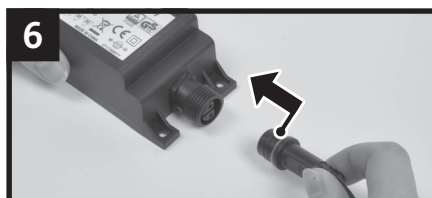
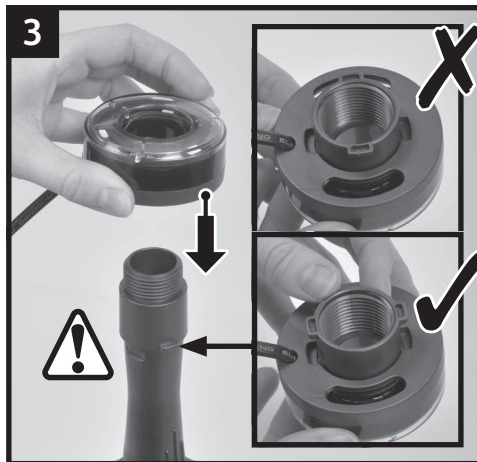
33037-000



Contents



Assembly



Installation & Operating Instructions



READ INSTRUCTIONS CAREFULLY BEFORE
INSTALLATION & USE.

The Light Module is intended as a pond light and should be used for that purpose.

The package contents are the Light Module with 7.5m 12 Volt cable and an inline transformer with 2m of 100-240V Cable.

Safety instructions

- The Light Module must only be connected to a 100V-240V/50 Hz mains supply via a safety transformer included with the product in accordance with Nationally approved standards.
- The safety transformer used must be connected to the mains supply by an electrically approved contractor if the product is to be hard wired, or it can be plugged into an RCD protected mains socket at least 3.5 m from the pond.
- The safety transformer supplied with this product is only suitable for connection to one Light Module.
- The safety transformer is completely waterproof and can be positioned outside.
- The safety transformer should be positioned out of direct sunlight.
- The Light Module is completely waterproof and can be used either below or above the pond surface.
- Do not use the cable for carrying the Light Module and never pull at the cable.
- There are no user serviceable parts on this Light Module.
- The 12Volt cable to the Light Module and the 100V-240V cable to the transformer cannot be replaced. If either cable is damaged, the Light Module must not be used and must be correctly disposed.
- The LED Lights are not replaceable.
- The power supply must always be disconnected during assembly and disassembly of the Light Module and during maintenance work.
- This appliance can be used by children aged from 8 years and above and persons with reduced physical, sensory or mental capabilities or lack of experience and knowledge if they have been given supervision or instruction concerning use of the appliance in a safe way and understand the hazards involved. Children shall not play with the appliance. Cleaning and user maintenance shall not be made by children without supervision.

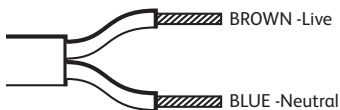
Installation

The Light Module is intended for use with all Hozelock Easyclear Models and Hozelock Cascade Models 1500LPH and 4000LPH and can be mounted in various positions: See Figs 1-8.

- Assemble the light to the Easyclear or Cascade (Figs 1-5).
- Connect the LV cable to the transformer ensuring the nut is screwed on fully (Figs 6-8).
- Switch on the power.

The Light Module can be mounted onto other products and items that accept the Light Ring profile.

Warning: This appliance must not be earthed, and it is essential that connections are made using the following code. The BROWN lead must be connected to the LIVE terminal marked 'L'. The BLUE lead must be connected to the NEUTRAL terminal marked N.



Cleaning

The exterior surfaces of the Light Module can be cleaned with soapy water and a soft brush or cloth.

Repair

No repair is possible so if Light Module housing, cable or transformer are damaged, you must no longer use the damaged part and dispose it.

The Light Module, the Transformer and an extension cable can be purchased separately from Hozelock.

Hozelock Cyprio 3 Year Guarantee

If this Light Module becomes unserviceable within 3 years of the date of purchase it will be repaired or replaced at our option free of charge, unless in our opinion it has been damaged.

Liability is not accepted for damage due to accident, improper installation or use.

Liability is limited to replacement of the faulty unit. This guarantee is not transferable. It does not affect your statutory rights.

To obtain the benefits of this guarantee, firstly contact Hozelock Cyprio Consumer Services (0121 313 1122) who may request that the unit is sent along with proof of purchase directly to the address below.

Contact

Hozelock Ltd.
Midpoint Park, Birmingham. B76 1AB
Tel: +44 (0) 121 313 1122
www.hozelock.com

Mains Power	100-240V AC 50/60Hz 3W
Mains Cable Length	2.0m
12V Cable Length	7.5m
Light Module	12V DC 1.5W IP68 Max Submersion 1.6m
LEDs	130 Lumens
Transformer	IP68 100-240V AC 50/60Hz



Do not dispose of electrical appliances as unsorted municipal waste, use separate collection facilities. Contact your local government for information regarding the collection systems available.

If electrical appliances are disposed of in landfills or dumps, hazardous substances can leak into the groundwater and get into the food chain, damaging your health and well-being.

In the EU, when replacing old appliances with new ones, the retailer is legally obligated to take back your old appliance for disposal at least free of charge.



Hozelock Ltd.
Midpoint Park, Birmingham,
B76 1AB. England
Tel: +44 (0) 121 313 1122

www.hozelock.com

33037-000